

Browse HF-FWI MC2D

Browse Basin 2D PreSDM & High Frequency FWI Reprocessing

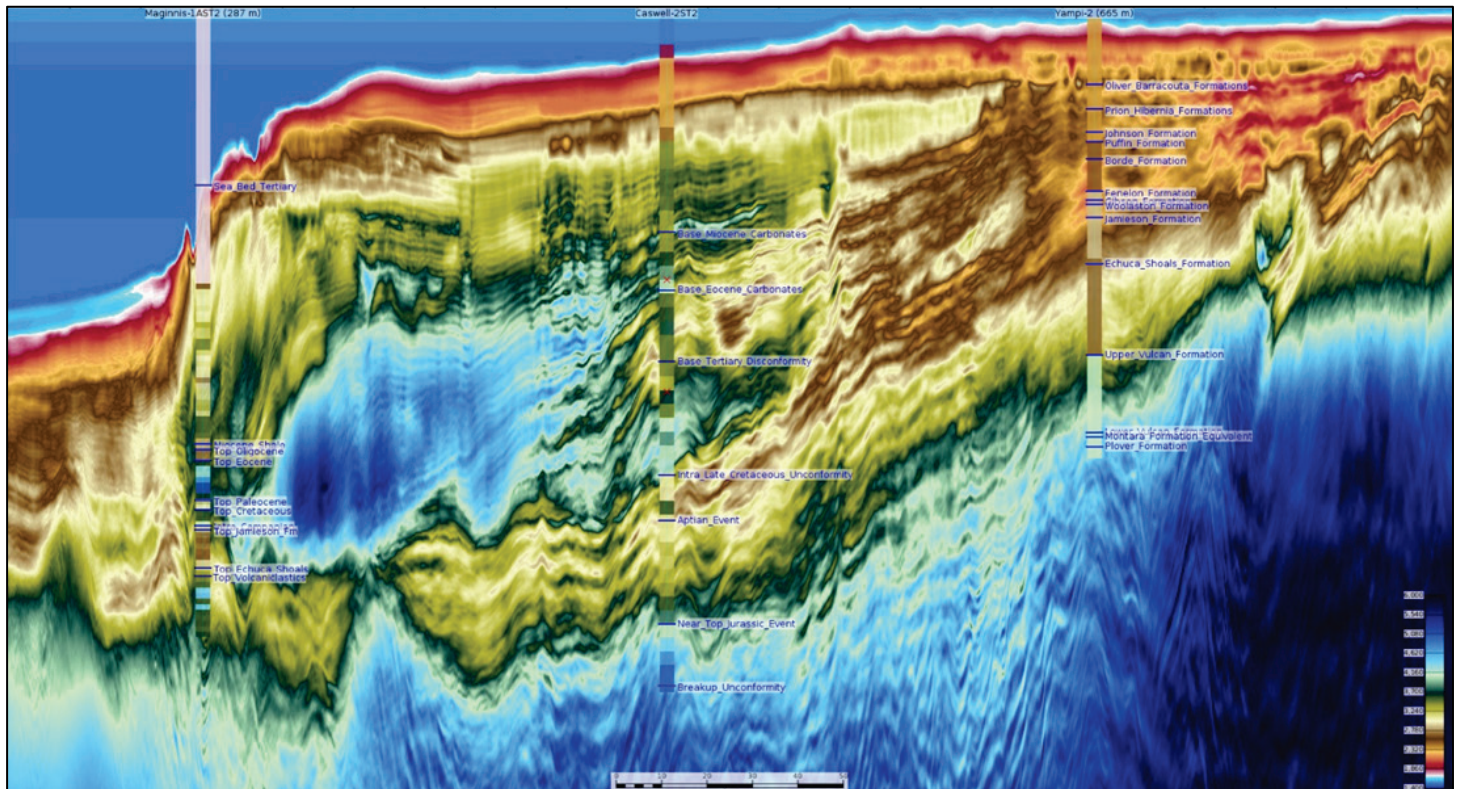
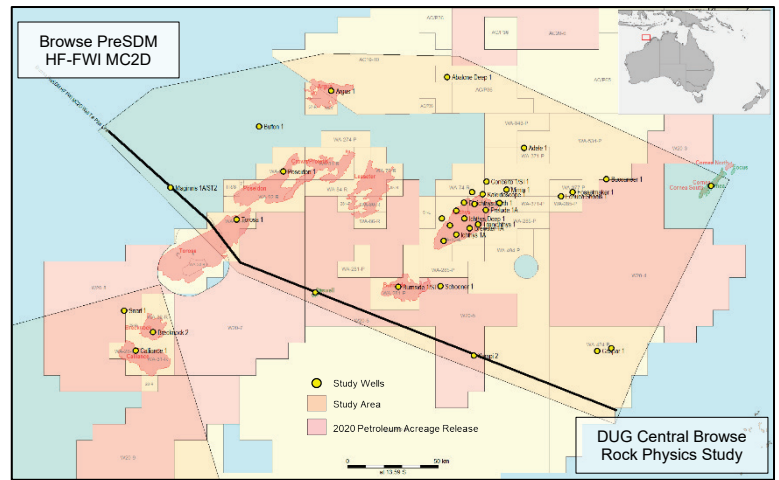
Project Overview

A PreSDM seismic reprocessing with high frequency FWI (75Hz) imaging of the AGSO MS 119 legacy survey acquired in 1994.

Provides an updated high definition cross section over the central Browse basin from the Seringapatam sub-basin in the northwest, across the Torosa gas field and Caswell oil accumulation down to the Yampi shelf in the southeast.

The advanced reprocessing reveals well defined lithofacies discrimination obtained from legacy seismic data with high frequency FWI imaging and PreSDM reprocessing.

The Browse HF-FWI MC2D data integrates with the DUG Central Browse Petrophysics and Rock Physics study.



Processing Parameters

- DUG Broad - receiver & source deghosting
- SRME, SWSRME & Radon demultiple
- Five iterations of reflection & refraction tomography
- Anisotropic pre-stack Kirchhoff depth migration
- High frequency FWI imaging

Deliverables

- Image gathers after migration in time & depth
- Full fold stacks & angle stacks in time & depth
- Migration velocity fields in time & depth
- FWI products
- Navigation data & final processing report

For further information please contact:

Stephen Doyle

+61 404 640 867

stephen.doyle@mresources.com.au