

## ONSHORE PERTH BASIN MULTI-CLIENT STUDY



A petrophysics, rock physics & stochastic modelling study of 23 wells  
(including unconventional analysis over potential gas shale layers)



## ONSHORE PERTH BASIN MULTI-CLIENT STUDY

### Data and Interpretation Study of 23 Wells

<b>Wells</b>	Agonis-1, Arrowsmith-2, Batavia-1, Corybas-1, Cliff Head-2, Drakea-1, Dongara-24, Eclipse-1, East Lake Logue-1, Evandra-1, Freshwater Point-1, Gingin West-1, Hovea-1, Leafcutter-1, Senecio-1, Snottygobble-1, Warradong-1, Waitsia-1, Waitsia-2, Warro-1, Warro-3, Woodada Deep-1, Yardarino-6
<b>Study Includes</b>	Petrophysics report, raw and final LAS including petro. evaluated & final elastic curves and TOC & Brittleness as part of unconventional analysis Brine substituted curves for all main elastic parameters (Sonic, Shear & Density) Rock Physics & Stochastic Modelling report including reservoir and non-reservoir trends and all possible seismic responses over the studied area Full documentation

### Petrophysics

Comprehensive petrophysical interpretation including porosity, saturation, and lithological evaluation by integrating all available data including wireline & LWD logs. Full composite interpretation plots accompanied with lithological descriptions, core analysis and well test information.

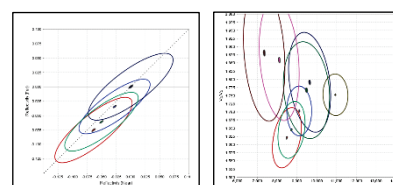
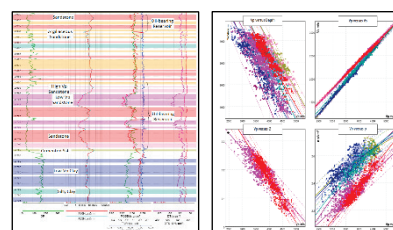
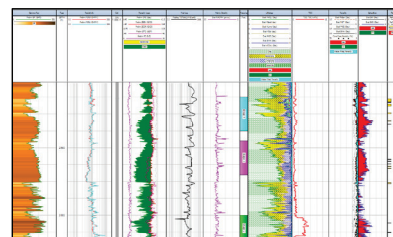
### Rock Physics

Statistical rock physics trends classified based on the lithology, elastic rock properties ( $V_p$ ,  $V_s$  and Density) or structural geology of the area (if required). The extracted rock physics trends can be used in quantitative seismic interpretation to extract geological information from the seismic data.

### Stochastic Forward Modelling

Can answer questions such as:

- › What type of AVA and amplitude response should I expect?
- › Does AVA aid in the discrimination and prediction of fluid and lithology?
- › What amplitude responses do we expect to see on full stack data?
- › What is the range (uncertainty) in the expected response?
- › Given the observed inherent scatter in end-member rock properties, can we discriminate between different lithology and fluid combinations in rock property space?
- › How do all the above change with depth, fluid and lithological variations?



**For further information please contact:**

**Stephen Doyle**

+61 404 640 867

stephen.doyle@mresources.com.au