

Exmouth HF-FWI MC2D

Exmouth Plateau 2D PreSDM & High Frequency FWI Reprocessing



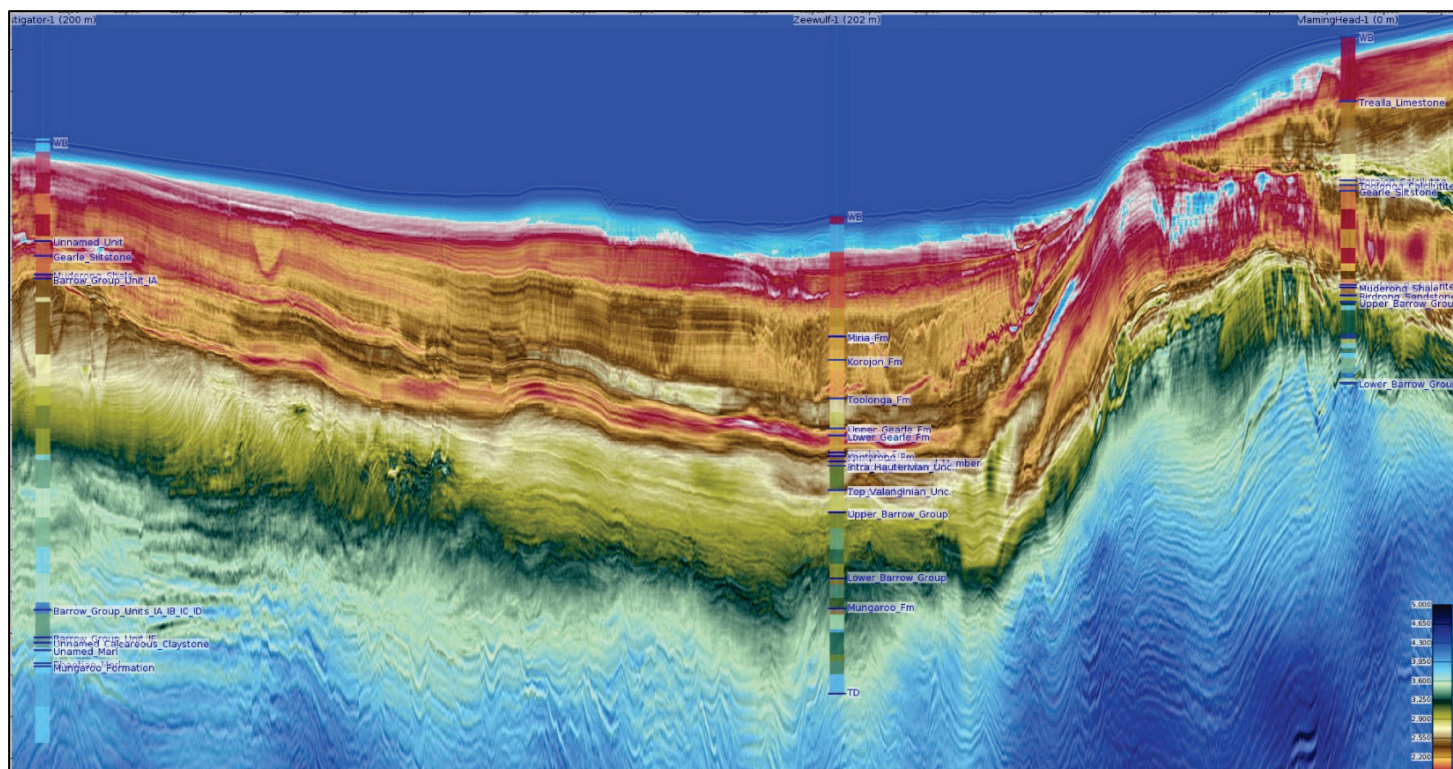
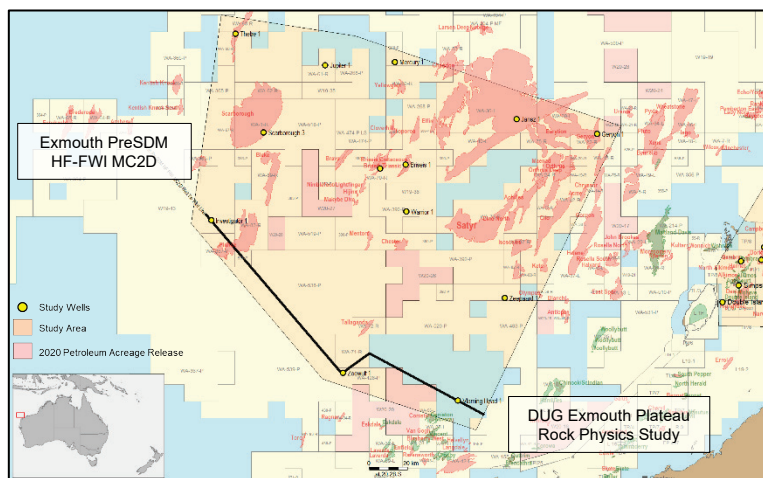
Project Overview

A PreSDM seismic reprocessing with high frequency FWI (75Hz) imaging of three combined legacy 2D survey lines acquired in 1993 & 1994.

Provides an updated high definition cross section over the Exmouth Plateau from the Investigator-1 well in the northwest, ties the Zeewulf-1 well to the southeast and Vlaming Head-1 well in the Exmouth Sub-basin to the east.

The advanced reprocessing reveals well defined lithofacies discrimination obtained from legacy seismic data with high frequency FWI imaging and PreSDM reprocessing.

The Exmouth HF-FWI MC2D data integrates with the DUG Exmouth Plateau Petrophysics and Rock Physics study.



Processing Parameters

- DUG Broad - receiver & source deghosting
- SRME, SWSRME & Radon demultiple
- Five iterations of reflection & refraction tomography
- Anisotropic pre-stack Kirchhoff depth migration
- High frequency FWI imaging

Deliverables

- Image gathers after migration in time & depth
- Full fold stacks & angle stacks in time & depth
- Migration velocity fields in time & depth
- FWI products
- Navigation data & final processing report

For further information please contact:

Stephen Doyle

+61 404 640 867

✉ stephen.doyle@mcresources.com.au