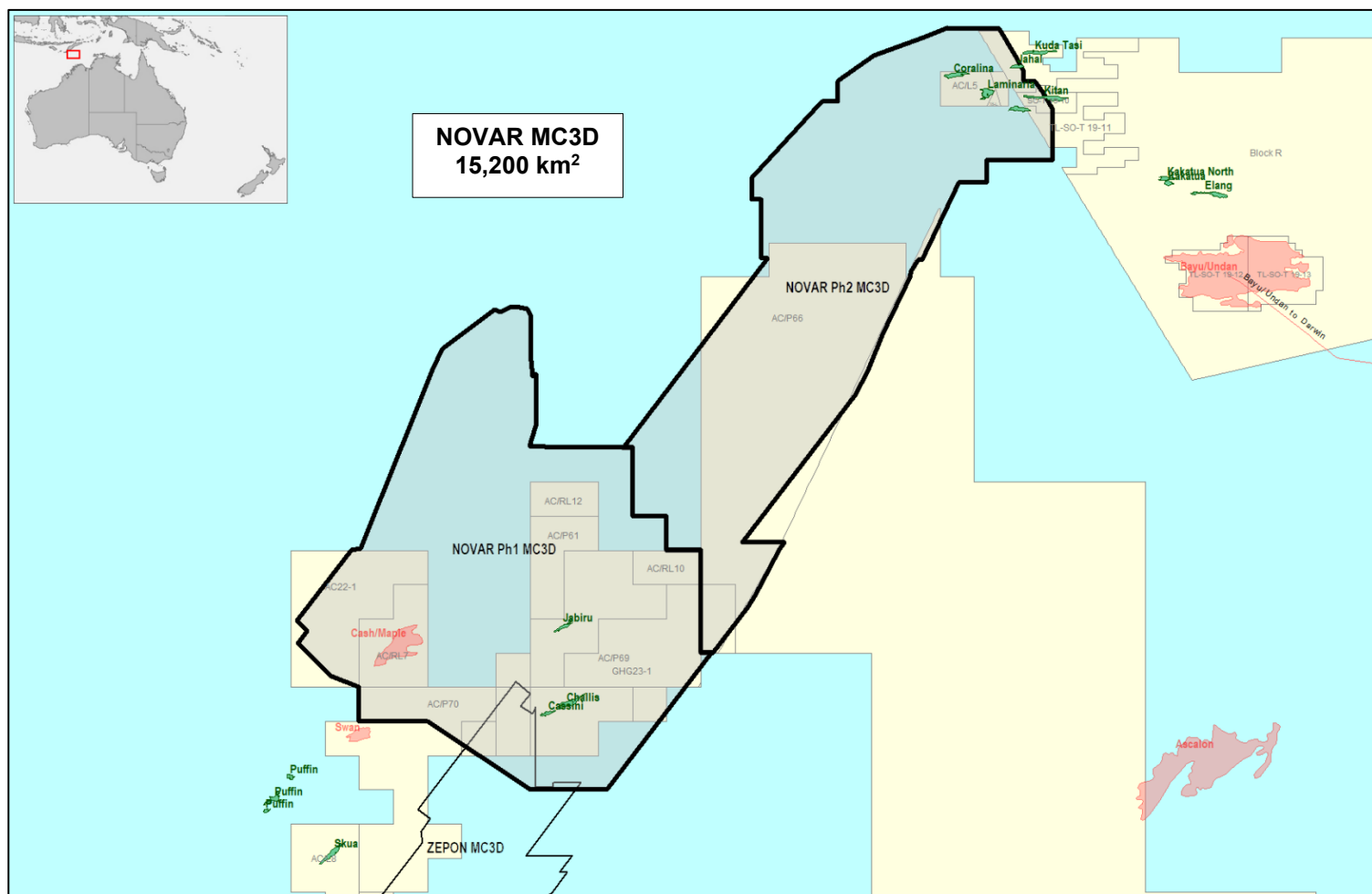


# NOVAR MC3D

North Vulcan Sub-Basin Advanced 3D Reprocessing



## Project Overview

One seamless 3D seismic dataset.

Incorporates 10 legacy 3D surveys using DUG's Advanced Broadband PreSDM workflow with FWI imaging.

Located over an area that has:

- Cash/Maple multi-TCF gas/condensate field development
- Many undeveloped discoveries
- Significant exploration upside potential

NOVAR MC3D designed for:

- Basin scale & prospect/field specific evaluations
- De-risking exploration & development
- Increasing Australia's oil and gas reserves
- Identifying proximal CCUS projects

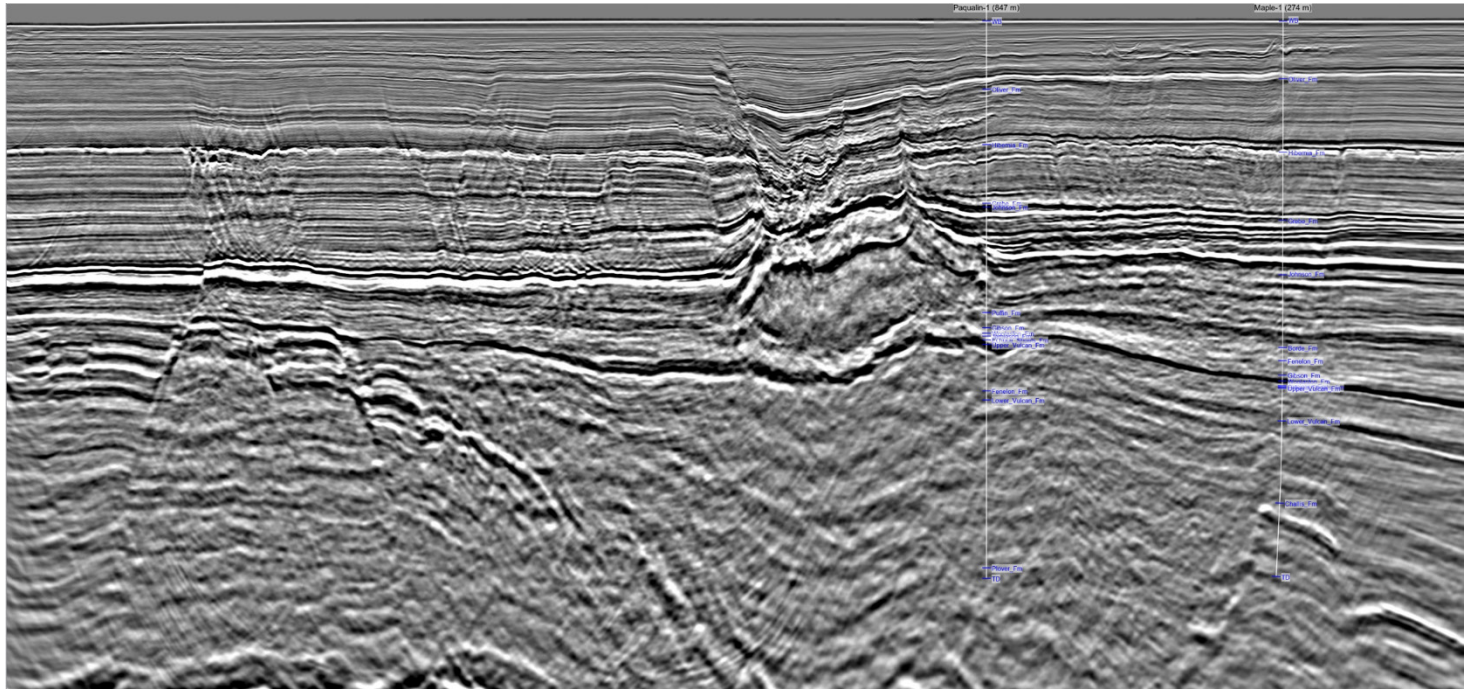
## Deliverables

- Image gathers after migration
- Full fold stacks & angle stacks in time & depth
- Migration velocity fields
- Final processing report
- Regional interpretation study
- QI Studies

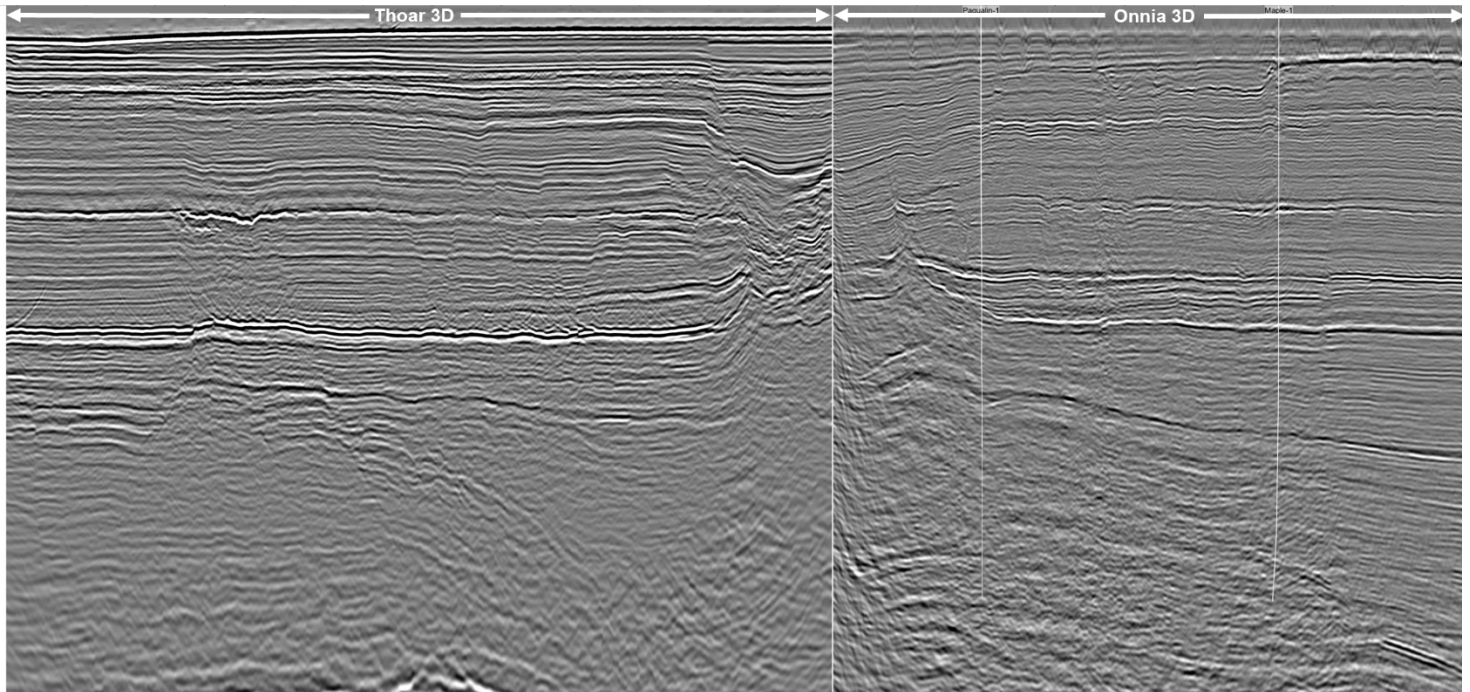
## Sustainability

The NOVAR MC3D reprocessing project applied technology-neutral approaches to exploration data acquisition, creating more value from renewed seismic imaging for exploration and development of natural resources within producing basins. The multi-client business model allows multiple E&P companies to use the same data, thereby reducing the requirement for additional seismic surveying and significantly reducing impacts on the environment.

## NOVAR MC3D – After Reprocessing



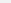
## Legacy 3D Surveys – Before Reprocessing



**For further information please contact:**

## Stephen Doyle

 +61 404 640 867

 [stephen.doyle@mcreources.com.au](mailto:stephen.doyle@mcreources.com.au)